



This newsletter provides an update on the Inverurie Health and Care Hub. Construction of the £14.6 million building has been well underway since December 2016 and is on course for completion and opening in the summer of 2018.

External blockwork and render of the building is almost complete. Floor coverings and joinery are well underway and the external car park at the front of the building has already been started.

What services will be provided in the new building?

- Inverurie Medical Group will be re-located to the new building. This is Scotland's largest medical practice and has around 24,500 patients.
- Community Nursing.
- Public Health Nursing.
- Community Maternity Unit (CMU).
- Urie Dental Practice.
- Allied Health Professionals.
- Diagnostic and treatment services including radiology, cardiology and audiology.
- Visiting consultant clinics.

The new Health and Care hub has been designed to be a leading example of integrated health and social care by providing the local community with a host of services which would previously have been

delivered on different sites, into a single hub.

Getting to the new building

It will be important that patients, carers and visitors are able to get to the new building as easily as possible. The provision of adequate car parking is an integral part of the project. The Project Team continue to explore public transport options with Aberdeenshire Council and local bus companies. An updated Travel Plan has been submitted to Aberdeenshire Council.

Where can I find out more about the project?

Architectural plans for the building and progress photographs can be seen at Inverurie Medical Group, 1 Constitution Street, Inverurie (8.30 am – 6 pm Monday to Friday).

The following link has a video produced by the architects which provides a 3D visualisation of the site:

www.nhsgrampian.org/inverurieproject

You can also find the project on Facebook at:

<https://en-gb.facebook.com/InverurieHealthandCareHub/>



Rumour has it!

In all big projects, there can sometimes be misinformation about project facts. Some of these rumours take a life of their own. This section of the newsletter aims to respond to the rumour mill – at least the ones we hear about!

Heard on the grapevine....

- Inverurie is getting a new hospital

No, this is not the case. The current Inverurie Hospital will remain as it is. The new building is a health and social care hub being built within the grounds of the Inverurie Hospital site. The only in-patient beds will be in the Community Maternity Unit of the new building.

- There will not be enough parking

Car parking provision will be greatly increased. There will be 240 standard parking spaces (this is an additional 145 spaces) and there will be 21 disabled spaces (an additional 7 spaces). In addition there will be 5 new parent and child spaces and 4 new motorcycle spaces. There will also be 3 covered bicycle stands that will each provide space for 6 parked bicycles.

- There won't be direct pedestrian access from Kellands Park

Yes, there will. There will be 3 new paved walkways from Kellands Park directly onto the site.

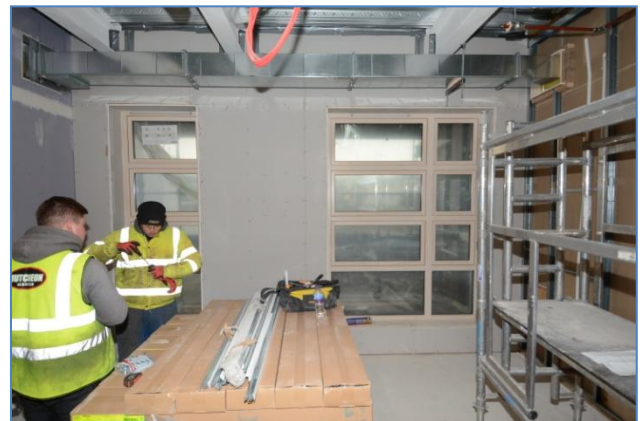
What is going to happen next?

The contractors will be finishing the internals of the building. The Project Team will be organising Equipment and Functional Commissioning meetings from January 2018 onwards. These meetings are where we get down to the fine practical details. Such meetings include what is going where from computer equipment to photocopiers to organising the quantity of removal boxes. This is a sure sign that we are in the final stretch before the moving in day.

Did you know?

There are around 90 people working on the site at any one time.

3 new apprentices were recruited by the main contractor, Morrison Construction, as a direct result of this project.



Please e-mail the Public Involvement Team at nhsg.involve@nhs.net if you would like to be added to our e-mail distribution list to receive future updates.

This newsletter is also available in large print, other formats or different languages on request. Please contact the Public Involvement Team at NHS Grampian on 01224 558098 or by e-mail to nhsg.involve@nhs.net